



WILDLIFE ANSWERS

Snake Relocation- What do we do?

If a snake is sighted in your the house or is causing potential danger to people or livestock, **WILDLIFE ANSWERS** hold the relevant permit to enable safe removal of the snake, and relocation to nearby habitat. If you require our service for snake relocation we may ask you to keep an eye on the snake until we arrive. Snakes can move very fast so this is necessary to ensure that the snake is still at the site when we arrive. This should be done from a safe distance and without putting yourself in proximity of the snake. Make sure that you have the ability to exit should the snake come closer to you for any reason.

If the snake is in a room of your house, remove any people or pets and try to isolate this room from any other. Shut all doors and window (without going near the snake).Exit the room and place a rolled towel under the door and push it into the corners with a ruler or blunt knife to ensure the snake does not come out under the door.

Leave the snake exactly where you found it and **WAIT!** We will be there as soon as possible. **DO NOT** attempt to capture or contain any snake as 90% of all snakebites are caused by people interfering with a snake.



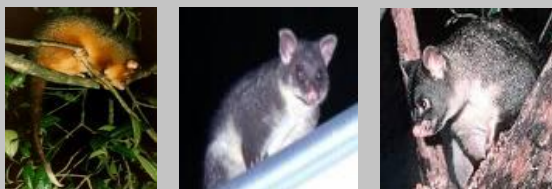
A carpet python removed from a guinea pig cage.

For All Snake **EMERGENCIES** contact
WILDLIFE ANSWERS - 0409051815



WILDLIFE ANSWERS

Below left - right: - Common Ringtail, Common Brushtail, Short Eared Possum.



Below left to right:- Red Bellied Black, Eastern Brown, Green Tree Snakes- note snakes can vary dramtically in color..never asume you know what it is..call an expert!



*Further Information on Possums & Snakes
can be found on our website
www.wildlifeanswers.com*



Phone: 0409 051 815

info@wildlifeanswers.com.au
<http://www.wildlifeanswers.com.au>

PO BOX 573
WATERFORD QLD 4133



WILDLIFE ANSWERS

WILDLIFE ANSWERS

HUMANE POSSUM TRAPPING



& EMERGENCY SNAKE REMOVAL



Phone: 0409 051 815

ABN 42 230 019 989



WILDLIFE ANSWERS

WILDLIFE ANSWERS specializes in Professional Wildlife Services including; Wildlife Management, Fauna Spotter Catcher, Licensed Snake Removal & Possum Removal.

WILDLIFE ANSWERS owner operator Mark Alexander has over 16 years of experience with various species of native wildlife, both as a volunteer wildlife rehabilitator and as a paid wildlife worker.

TRAPPING & RELOCATION SERVICES

All native wildlife including Snakes & Possums are protected by law and cannot simply be moved from their habitat, even if their habitat is your premises.

HUMANE POSSUM TRAPPING

Our Possum trapping program is based on years of experience dealing with possums and is a safe and effective way to capture possums in order for them to be relocated outside of your premises. It operates in line with the DERM regulations which require possums are relocated no more than 25 meters away from point of capture, but allows home owners the opportunity to have the possums removed from their dwelling.



WILDLIFE ANSWERS

POSSUM TRAPPING - What do we do ?

WILDLIFE ANSWERS will conduct a site assessment to ascertain possible entry points. This is dependent on roof/ceiling entry and roof height and may not involve heights of over single storey.

WILDLIFE ANSWERS will provide the home owner with, photographs & written recommendations for excluding possums from the dwelling.

NOTE: - WILDLIFE ANSWERS are not licensed roof repairers; however we will make small repairs to accessible areas and can arrange for a licenced repairer if required.

WILDLIFE ANSWERS will conduct a **4 day** trapping program which includes the placing and checking of humane capture traps on a daily basis

WILDLIFE ANSWERS will remove possums from traps and hold until nightfall, before releasing them back to the property. (No possum will be left in a trap more than over night)



NOTE this program can only be effective if ALL access points are cut off for the possum. WILDLIFE ANSWERS does not guarantee capture of the possum /or exclusion of the possum. But we will work with you to achieve the best possible outcome for all.



WILDLIFE ANSWERS

POSSUMS

There are three common species of Possum for in South East Queensland. All are nocturnal, choosing to spend their days in their nests or hollows, emerging early evening to feed and returning to their homes before sunrise.

COMMON RINGTAIL POSSUMS

The smallest of the three species, the Common Ringtail Possum (*Pseudocheirus peregrinus*) is about half the size of a cat and weighs approx 1 kg when fully grown. They have small rounded ears and a thin tail with a white tip. They can vary in color, but are usually a rusty rufus color with a darker nape of the neck. These possums live in family groups in a ball shaped drey of sticks and twigs. Whilst Common Ringtail Possum are found in inner city areas they rarely are a nuisance.

COMMON BRUSHTAIL POSSUM

By far the most familiar possum is the Common Brushtail Possum (*Trichosurus vulpecula*). This is a large cat size animal, which can weigh up to 4 kg as an adult. They have large pointed ears and a thick bushy tail with a bare underside. They can vary in color but are usually a slate grey with silver tips to the fur with a lighter underbelly. Males may have a dark stain on their chest area, this is the scent gland. The Brushtail possum is a mainly solitary animal, though a female may be seen with a previous years young. Often a urine stain on the ceiling is the first sign of a resident Brushtail Possum.

SHORT EARED/ MOUNTAIN BRUSHTAIL/BOBUCK

The largest of the three local Possum species is the Common Short Eared Possum, Mountain Brushtail or Bobuck (*Trichosurus caninus*). It is generally restricted to the mountain, & rainforest areas. Similar in size and shape to the Brushtail Possum, it has smaller rounded ears and has a less bushy tail toward the tip. It is darker grey to black with a pale underbelly. Juvenile Bobucks stay with their mothers for up to two years.